

# uPRO WEANER

Helps reduce the stress of weaning and kickstart growth.

## How it works

uPRO WEANER is a water-soluble supplement designed as a starter supplement for weaned calves. It helps to reduce the impacts of weaning stress and supports a smooth transition into the growth phase through the supplementation of protein, phosphorus, and essential trace minerals.

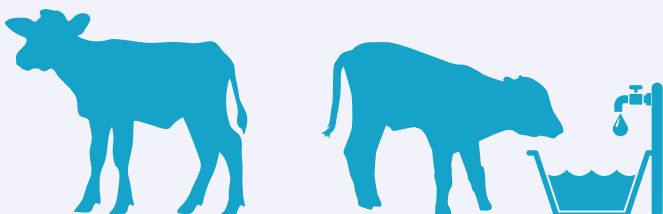
### Available with uTRACE Premium:

uTRACE Premium offers enhanced bioavailability of trace minerals and is specifically designed to meet the Cu requirements of cattle.

### Seamless supplement delivery

Deploy the uDOSE™ proportional delivery system to seamlessly provide your target amount of uPRO WEANER to livestock via their drinking water. uDOSE™ makes supplementing automatic and accurate, while also providing remote monitoring and adjustment capabilities, so you can tailor flow rates to your specific livestock and conditions.

- ✓ Stays dissolved, won't settle out
- ✓ Tailored to ruminant taste
- ✓ uDOSE™ systems are portable for rotational grazing



## Production benefits

### Promote optimal growth and development

uPRO WEANER supports muscle and nerve function, enhancing bone health and ensuring the formation and maintenance of strong bones and teeth for healthy skeletal development.

### Boost immune system and metabolic function

This supplement helps weaners to fight off infections and diseases during the stressful weaning period when they are more susceptible to illnesses.

It plays a critical role in energy metabolism, converting nutrients from feed into usable energy, which is vital for growth and overall vitality.

### Enhance feed efficiency and weight gain

uPRO WEANER aids in the breakdown and absorption of nutrients, ensuring weaners get the maximum benefit from their feed, and improves overall digestion.

### Develop reproductive health

It contributes to the development of reproductive organs and future fertility, ensuring long-term productivity.

**uPRO WEANER ensures that weaning calves grow and develop healthily, setting a solid foundation for their future productivity.**

## Key nutrients

**Magnesium** is beneficial for ruminants, as efficient digestion and access to stored magnesium promote overall health and resilience to grass tetany and stress from sudden feed changes. It reduces stress by inhibiting stress hormones and relaxing nerve impulses.

**Nitrogen** boosts animal production, promoting healthy weight gain, growth, and milk production.

**Phosphorus** supports animal bone and muscle health, enhancing productivity, fertility, and overall well-being.

**Sulphur** plays a key role in metabolic, structural, and regulatory functions, fostering optimal rumen function, productivity, and overall health in animals.

**Sodium and chloride** (flossy salt) helps maintain body fluids, muscle, and nerve functions.

### TRACE ELEMENTS

**Cobalt** essential for vitamin B12 synthesis, thus improving appetite and energy utilisation.

**Copper** improves hair quality, joints, and tissue production. Essential for healthy fetal development, bone growth, and immunity.

**Iodine** improves fertility, immunity and growth.

**Manganese** improves fertility and healthy fetal development, including skeletal development and nerve function.

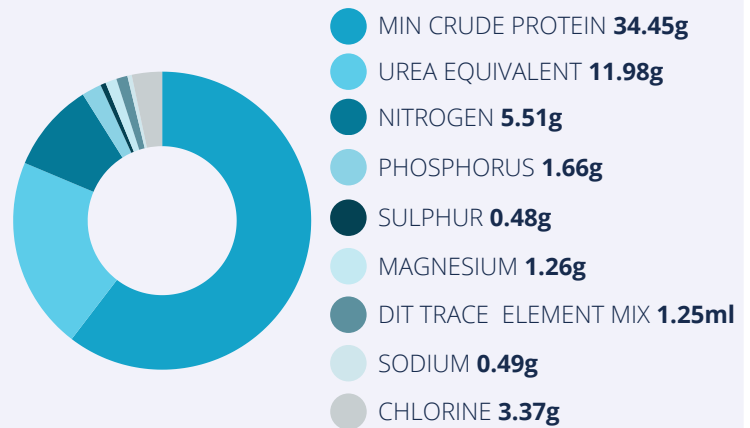
**Selenium** supports fetal development, immune function, hair coat health, fertility, and muscle development. Enhances an animal's ability to resist infections, recover from illness, and reproduce successfully.

**Zinc** improves foot and hoof health, boosts immune function, and assists cell development.

**The uTRACE Premium difference:** it increases bioavailability, allowing for better absorption in the body.

## Macro ingredient composition

per standard quantity of **50ml AE/day**



**Av. cost 15c** per head/day

## How to buy

uPRO WEANER has been formulated for compatibility with the uDOSE™ supplement delivery system. Purchasing options include:

**Liquid:** Pre-mixed and ready to use.

## Further reading

**Meat & Livestock Australia research on mineral deficiencies.** For info about the conditions when mineral deficiencies are likely to occur: <https://www.mla.com.au/research-and-development/animal-health-welfare-and-biosecurity/diseases/nutritional/mineral-deficiencies/>

### DIT AgTech Literature Reviews

Contact us for details and to obtain your copy.



📞 1300 123 348

✉ sales@ditagtech.com.au

🌐 www.ditagtech.com.au

🇦🇺 Australian Made & Owned